

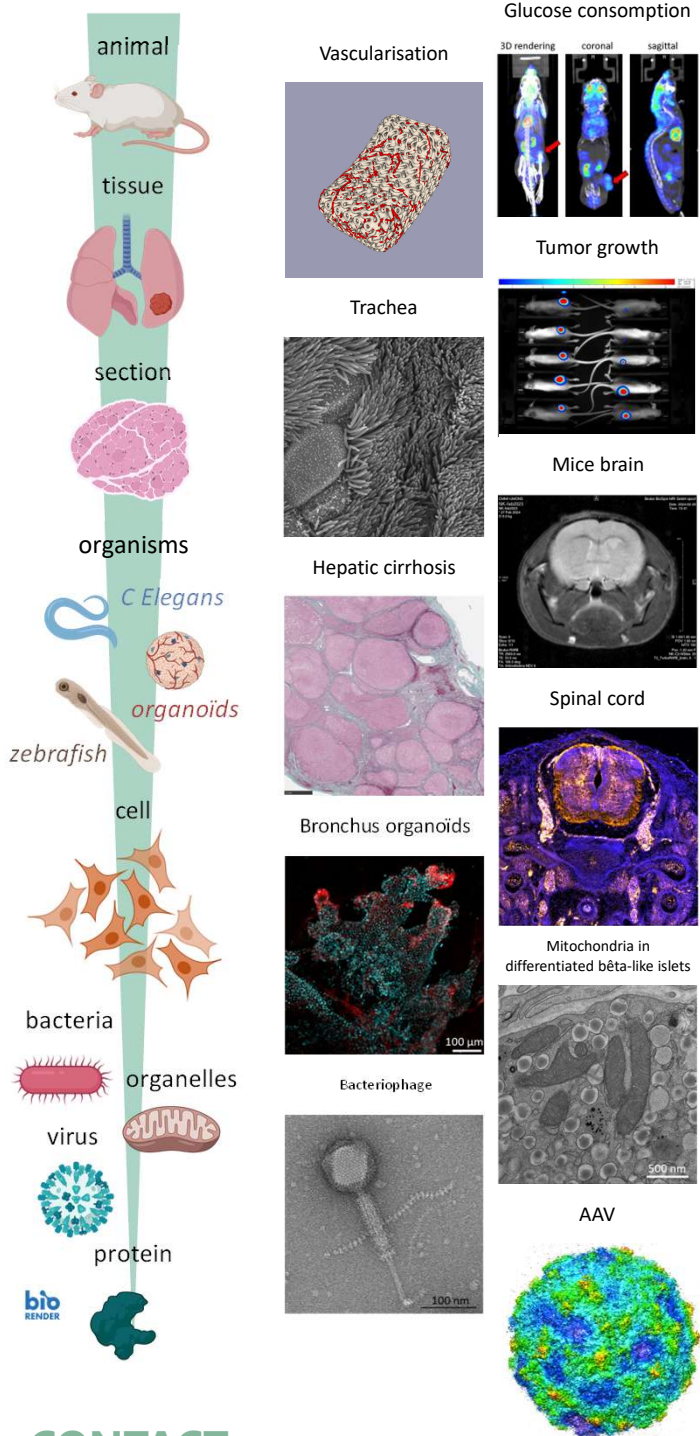


# THE CENTER FOR MICROSCOPY AND MOLECULAR IMAGING

excellence in (pre)-clinical imaging

## MISSIONS

The CMMI is an integrated preclinical imaging facility of **UMONS** and **ULB** which provides **services** and **training** for **academic** and **industrial partners**. We are part of the Biopark Charleroi, Brussels South, à Gosselies, Belgium.



## CONTACT

✉ [info@cmmi.be](mailto:info@cmmi.be)  
Rue Adrienne Bolland, 8 - B-6041 Gosselies, Belgium



## EXPERTISES

Equipped with state-of-the-art imaging tools, the CMMI is structured around 5 axes :

**Microscopy** : Fluorescence microscopy with WF, CLSM, Super Resolution STED ; electron microscopy with (cryo)-TEM and SEM

**Digital Image Analysis in Pathology** : Validation of tissue-based biomarkers using special staining, standardized immunohistochemistry (IHC) and multiplexed immunofluorescence (mIF), whole slide imaging and image analysis (with artificial intelligence) for objective quantitative analysis.

**Spatially resolved multi-omics molecular mapping**  
CyTOFMS and IMS

**In vivo Imaging** : MRI (1T & 9,4T), optical and optoacoustic imaging,  $\mu$ PET/CT,  $\mu$ SPECT,  $\mu$ CT HR and *ex vivo* autoradiography

**Multimodal Image Processing**

## OFFERS

The main aim of the CMMI as a leading research center in the field of imaging is to provide prompt, accurate results to support global development programs from early discovery, R&D, (pre)-clinical investigations to clinical *ex vivo* studies.

We perform services for Lifesciences, Biotech (ATMP), Medtech researchers, evaluate technologies linked to image acquisition (tracers or radiolabels) and develop analysis improvement such as deep learning.



LE FONDS EUROPÉEN DE DÉVELOPPEMENT RÉGIONAL ET LA WALLONIE INVESTISSENT DANS VOTRE Avenir